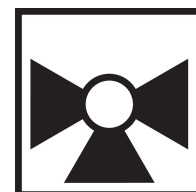


### Butterfly Valve with Grooved types

- Disc electroless nickel coated ductile iron
- Bubble tight shut-off
- Resilient seat
- Valve face-to-face dimensions comply with AWWA (c606) & MSS-SP-67
- Completely assembled and tested, ready for installation
- VIC-300 Masterseal is manufactured by the Victaulic Company.



5-year warranty



### Type overview

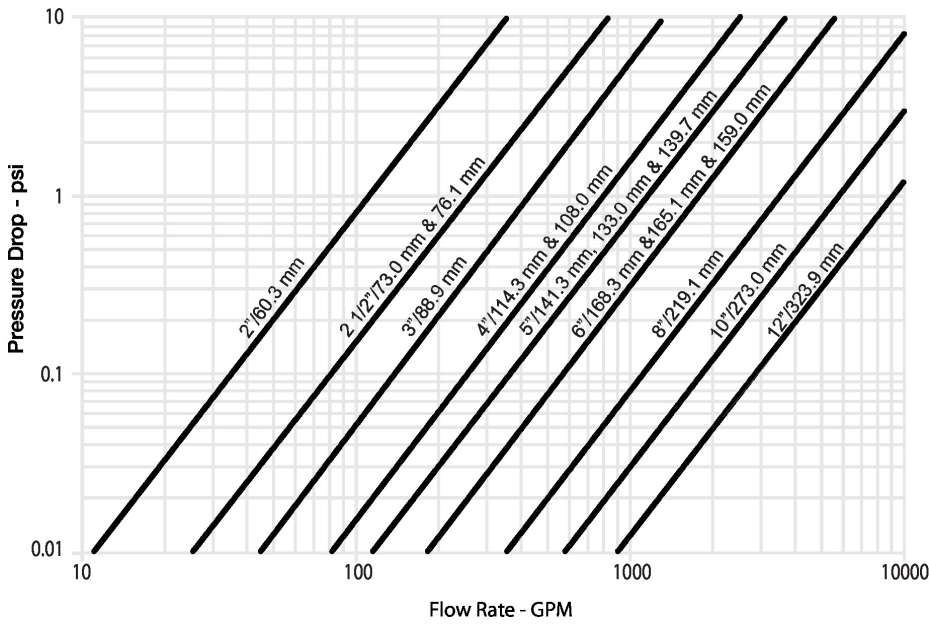
Type	DN
F750VIC	50

### Technical data

Functional data	Valve size [mm]	2" [50]
	Fluid	chilled or hot water, up to 60% glycol
	Fluid Temp Range (water)	-30...120°C [-22...250°F]
	Body Pressure Rating	ANSI Class Grooved AWWA, 300 psi
	Flow characteristic	modified linear
	Leakage rate	0%
	Pipe connection	Grooved ANSI/AWWA (c606)
	Servicing	maintenance-free
	Flow Pattern	3-way Mixing/Diverting
	Controllable flow range	90° rotation
	Cv	115
	Maximum Velocity	20 FPS
Materials	Valve body	Ductile cast iron ASTM A536
	Body finish	black alkyd enamel
	Stem	416 stainless steel
	Stem seal	fiberglass with TFE lining
	Seat	EPDM
	Disc	electroless nickel coated ductile iron
Suitable actuators	Non Fail-Safe	GMB(X)
	Spring	AF 2*AFB(X)

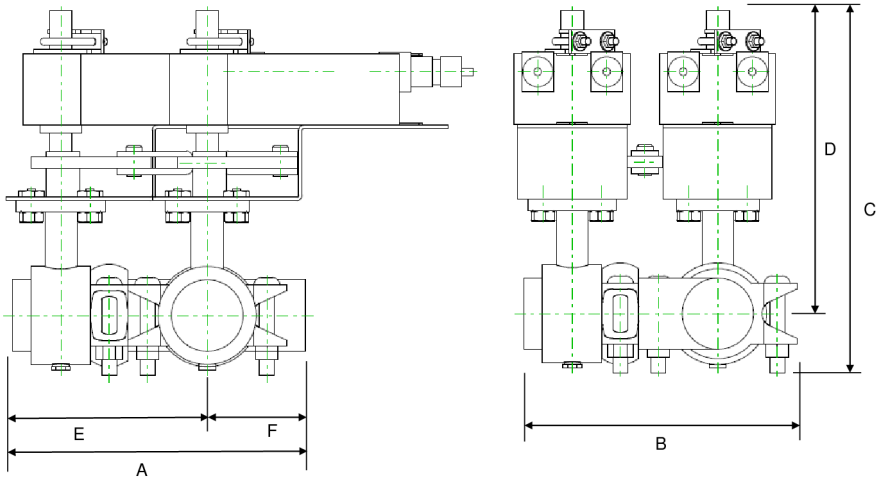
Product features

Flow/Mounting details



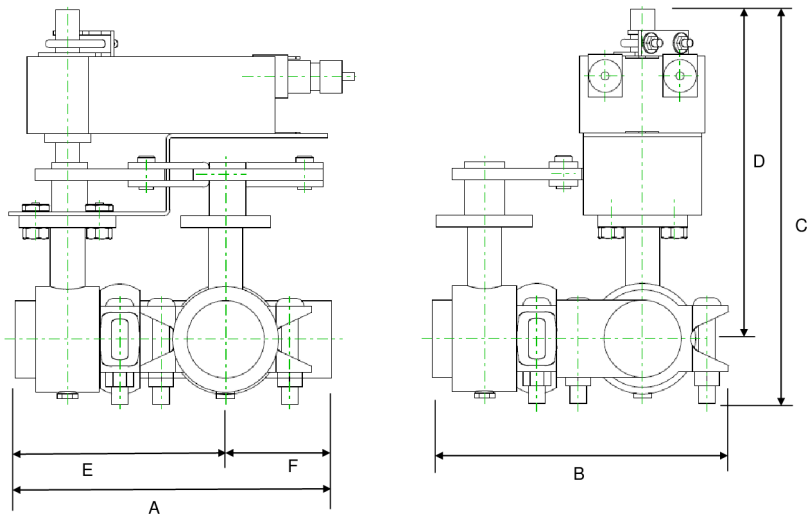
Dimensions

Type	DN	Weight
F750VIC	50	30 lb [14 kg]



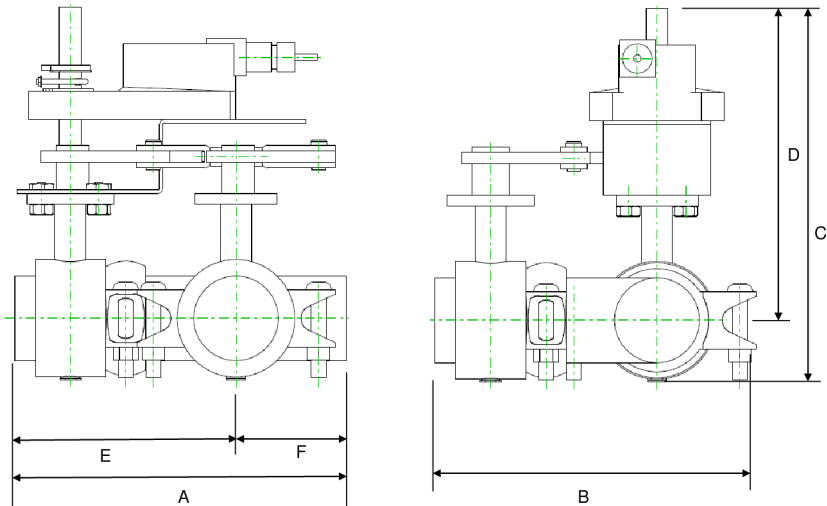
2AF

A	B	C	D	E	F
15.3" [388]	9.1" [231]	11.6" [294]	9.8" [248]	6.5" [165]	3.3" [85]



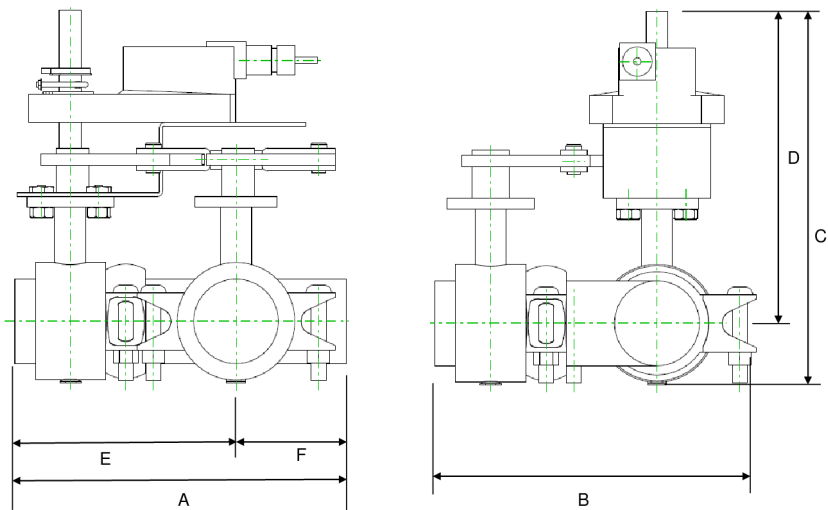
AF

A	B	C	D	E	F
10.4" [264]	9.1" [231]	11.9" [302]	10.1" [256]	6.5" [165]	3.3" [85]



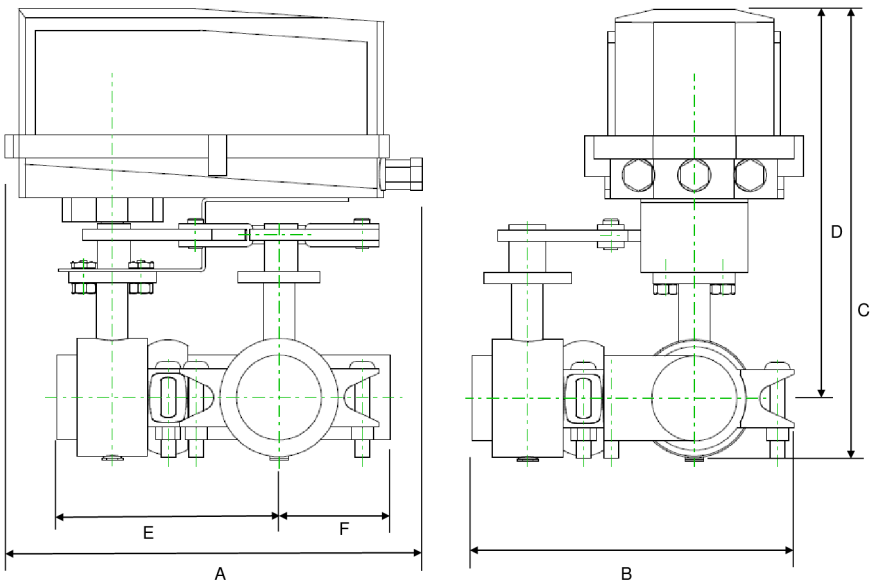
AM

A	B	C	D	E	F
9.7" [246]	9.1" [231]	11.9" [302]	10.1" [256]	6.5" [165]	3.3" [85]



GM

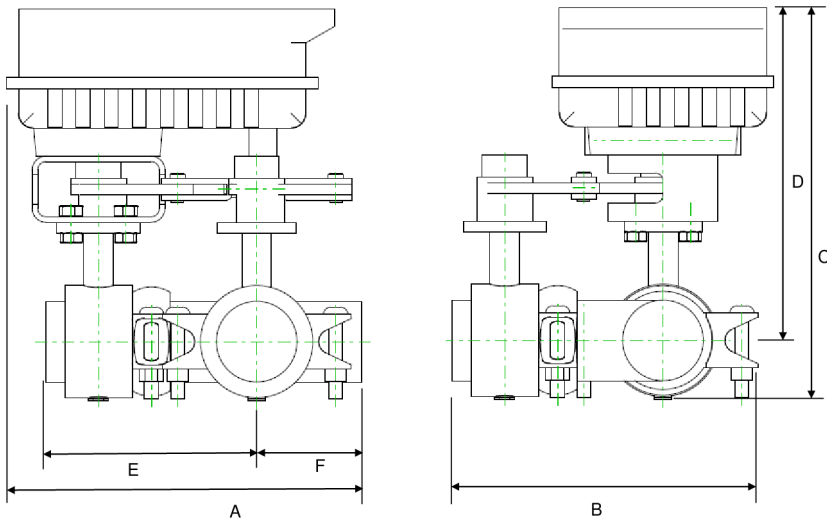
A	B	C	D	E	F
9.7" [246]	9.1" [231]	11.9" [302]	10.1" [256]	6.5" [165]	3.3" [85]



GM N4

A	B	C	D	E	F
14.1" [358]	9.1" [231]	14.5" [368]	12.7" [323]	6.5" [165]	3.3" [85]

Dimensions



PRB(X)

A	B	C	D	E	F
12.0" [304]	9.1" [231]	13.2" [335]	11.4" [290]	6.5" [165]	3.3" [85]

On/Off, Spring return, 24...240 V



5-year warranty



## Technical data

Electrical data	Nominal voltage	AC 24...240 V / DC 24...125 V
	Nominal voltage frequency	50/60 Hz
	Nominal voltage range	AC 19.2...264 V / DC 21.6...137.5 V
	Power consumption in operation	7 W
	Power consumption in rest position	3.5 W
	Transformer sizing	36 VA
	Electrical Connection	18 GA appliance cable, 3 ft [1 m], with 1/2" NPT conduit connector
	Overload Protection	electronic throughout 0...90° rotation
Functional data	Direction of motion motor	selectable by ccw/cw mounting
	Direction of motion fail-safe	reversible with cw/ccw mounting
	Manual override	5 mm hex crank (3/16" Allen), supplied
	Angle of rotation	95°
	Running Time (Motor)	75 s / 90°
	Running time fail-safe	<20 s
	Noise level, motor	50 dB(A)
	Noise level, fail-safe	62 dB(A)
Safety data	Position indication	Mechanical, 30...65 mm stroke
	Power source UL	Class 2 Supply
	Degree of protection IEC/EN	IP54
	Degree of protection NEMA/UL	NEMA 2
	Enclosure	UL Enclosure Type 2
	Agency Listing	cULus acc. to UL60730-1A/-2-14, CAN/CSA E60730-1:02, CE acc. to 2014/30/EU
	Quality Standard	ISO 9001
	UL 2043 Compliant	Suitable for use in air plenums per Section 300.22(C) of the NEC and Section 602 of the IMC
	Ambient humidity	Max. 95% RH, non-condensing
	Ambient temperature	-22...122°F [-30...50°C]
	Storage temperature	-40...176°F [-40...80°C]
	Servicing	maintenance-free
Weight	Weight	□
Materials	Housing material	Galvanized steel and plastic housing

## Technical data

**Footnotes** †Rated Impulse Voltage 4kV, Type of action 1.AA, Control Pollution Degree 3.

## Electrical installation


**Warning! Live electrical components!**

During installation, testing, servicing and troubleshooting of this product, it may be necessary to work with live electrical components. Have a qualified licensed electrician or other individual who has been properly trained in handling live electrical components perform these tasks. Failure to follow all electrical safety precautions when exposed to live electrical components could result in death or serious injury.



Actuators with appliance cables are numbered.



Universal Power Supply (UP) models can be supplied with AC 24...240 V, or DC 24...125 V.



Apply only AC line voltage or only UL-Class 2 voltage to the terminals of auxiliary switches. Mixed or combined operation of line voltage/safety extra low voltage is not allowed.



Meets cULus requirements without the need of an electrical ground connection.



Provide overload protection and disconnect as required.



Actuators may also be powered by DC 24 V.



Actuators may be powered in parallel. Power consumption must be observed.



Parallel wiring required for piggy-back applications.

## Wiring diagrams

On/Off

24 to 240 VAC

